



10/2 Marfell Road Warrnambool VIC

2  2  1 

Located on the banks of the Hopkins River in Warrnambool, Lyndoch Living Retirement Village offers a safe and relaxed beachside lifestyle with access to all the wonderful sights and events Southwest Victoria has to offer. Featuring:

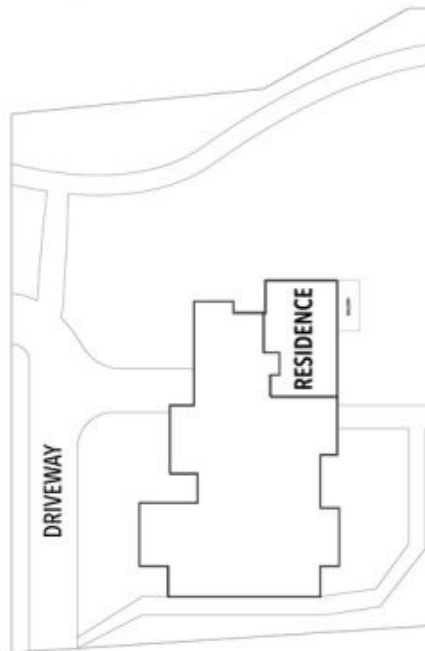
- 2 bedrooms with large BIR's, fans - main with large ensuite.
- Open plan kitchen with electric oven and hotplates, DW and pantry.
- Main bathroom with shower and WC.
- Secure one car garage parking with storage cage and visitors parks.
- Intercom.
- Central heating/cooling.
- European laundry and additional storage.
- Large balcony overlooking the river and Hopkins Bridge.

Building Size : 14 sqm
Land Size : 112 sqm
View : <https://www.falk.com.au/sale/vic/warrnambool-port-fairy/warrnambool/residential/apartment/7681300>



Gary Attrill
03 5561 1677

10 MARFELL ROAD, WARRNAMBOOL, VIC



INTERNAL 134 SQM APPROX

THE ABOVE PLAN IS AN ARTIST'S IMPRESSION ONLY, IT INCLUDES ELEMENTS THAT ARE FOR DISPLAY PURPOSES ONLY AND MAY NOT BE TO SCALE. LANDSCAPING SHOWN IS INDICATIVE ONLY. DIMENSIONS ARE APPROXIMATE.