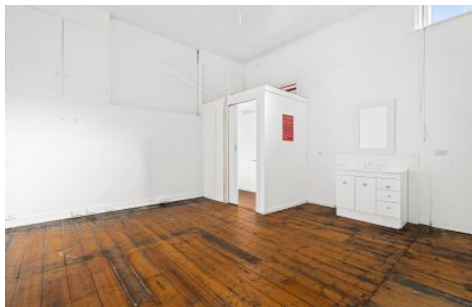


Falk & Co



147/ Kepler Street Warrnambool VIC

The perfect office or retail premises offering 74.52m² with great customer parking outside, the building has a main area of 55m² and store room and toilet.

Building Size : 74.52 sqm
View : <https://www.falk.com.au/lease/vic/warrnambool-port-fairy/warrnambool/commercial/retail/7703094>



David Falk
03 5561 1677