



4/22 Mitchell Street Warrnambool VIC

2 1 1

Situated in North Warrnambool with views over the racecourse and Brierly Park is this stylish & sophisticated two-bedroom townhouse. The residence comprises of two spacious bedrooms with large built in robes, master with semi ensuite and views. Light and bright open plan kitchen, living and dining area that opens onto entertaining areas at both ends. An open deck area with lawn surrounds and the other a sheltered courtyard. Remote controlled single car garage. Currently returning \$475 per week with outstanding tenants, an investment opportunity too good to be missed or make it your home of the future in a quiet location.

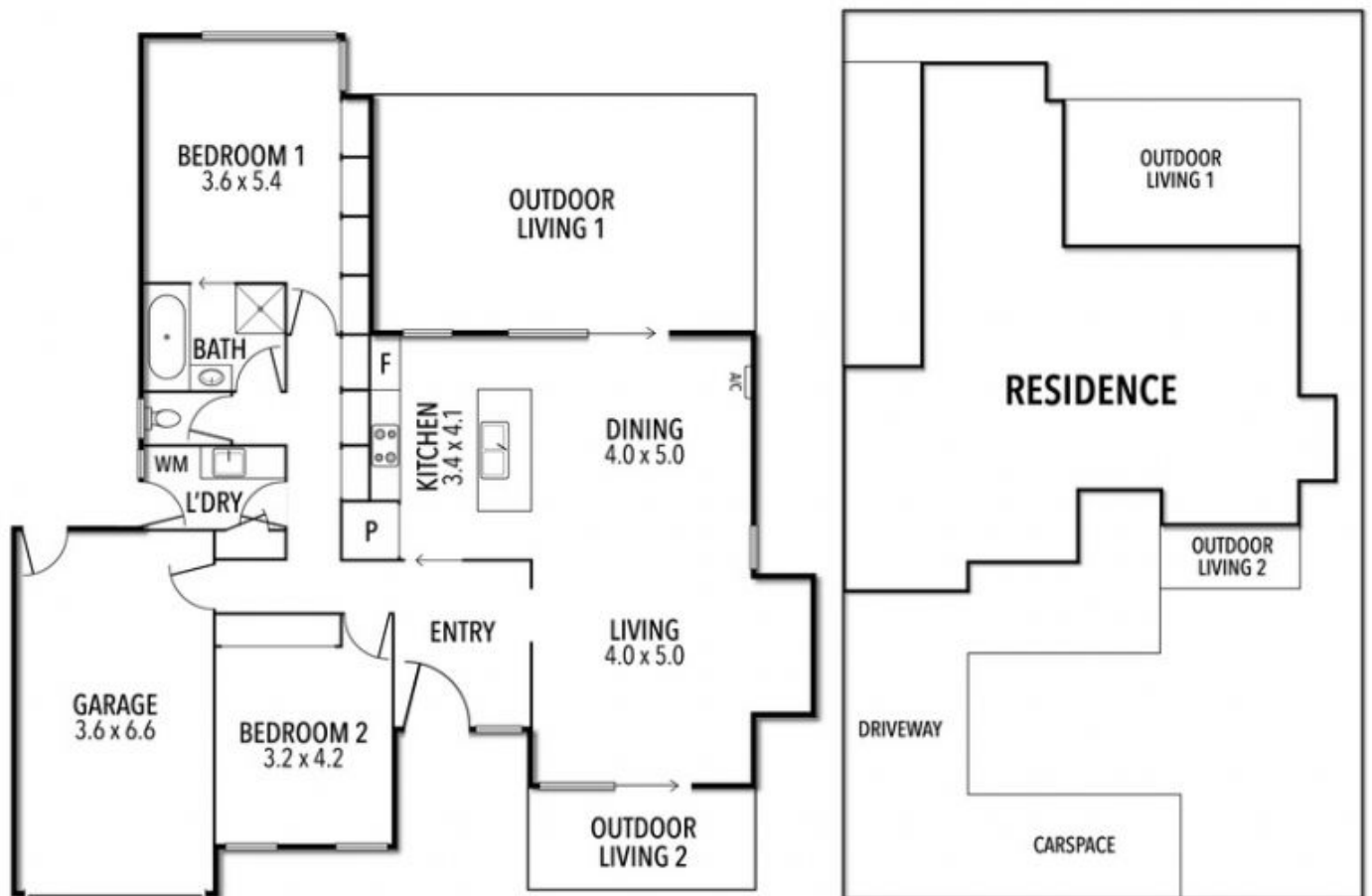
Vendor keen to move property and will negotiate.

Price : \$510,000 to \$530,000
Land Size : 347 sqm
View : <https://www.falk.com.au/sale/vic/warrnambool-port-fairy/warrnambool/residential/townhouse/7833199>



Gary Attrill
 03 5561 1677

4 / 22 MITCHELL STREET, WARRNAMBOOL, VIC



INTERNAL 140 SQM APPROX.

THE ABOVE PLAN IS AN ARTIST'S IMPRESSION ONLY, IT INCLUDES ELEMENTS THAT ARE FOR DISPLAY PURPOSES ONLY AND MAY NOT BE TO SCALE. LANDSCAPING SHOWN IS INDICATIVE ONLY. DIMENSIONS ARE APPROXIMATE.