



7 Wirilda Trail Warrnambool VIC

4  2  2 

Masses of space combined with an abundance of natural light work harmoniously to create this stunning property. An expansive residence offers clever zoning and an irresistible indoor/outdoor flow, incorporating a magnificent outdoor setting on a substantial allotment.

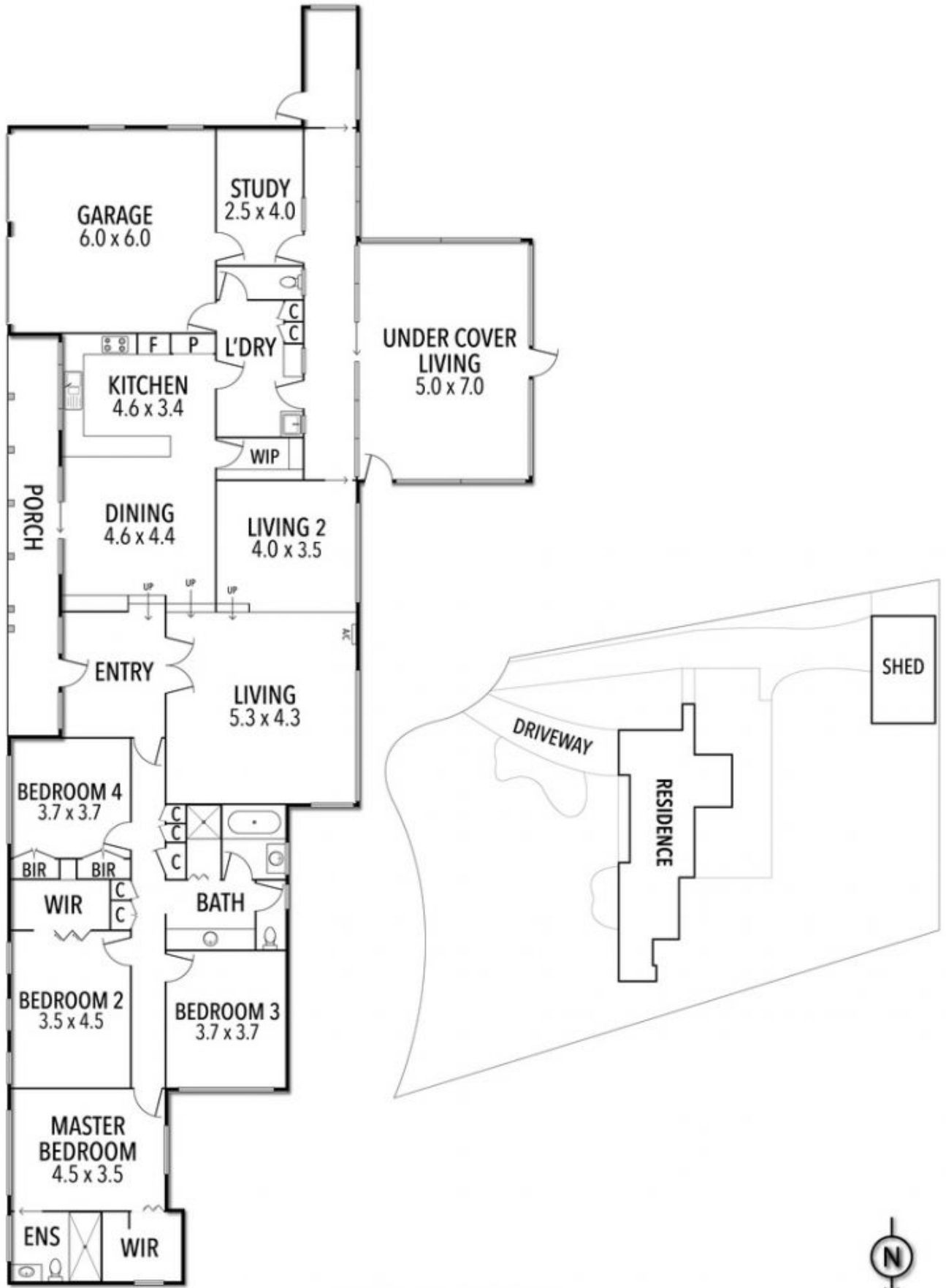
- 4 bedrooms main with en suite and WIR, others with WIR & BIR's
- Open plan north facing kitchen with pantry, electrical appliances and DW
- 2 large living areas and separate study
- Central bathroom with bath, shower and WC
- Double garage with remote doors
- Large undercover outdoor/ bbq area, additional fernery and undercover enclosed yard
- Bore with sprinklers system though out the property
- Electric floor heating, solar panels and security system

Building Size : 358 sqm
Land Size : 3073 sqm
View : <https://www.falk.com.au/sale/vic/warrnambool-port-fairy/warrnambool/residential/house/7833200>



Gary Attrill
03 5561 1677

7 WIRILDA TRAIL, WARRNAMBOOL, VIC



INTERNAL 358 SQM APPROX



THE ABOVE PLAN IS AN ARTIST'S IMPRESSION ONLY, IT INCLUDES ELEMENTS THAT ARE FOR DISPLAY PURPOSES ONLY AND MAY NOT BE TO SCALE. LANDSCAPING SHOWN IS INDICATIVE ONLY. DIMENSIONS ARE APPROXIMATE.