

Falk & Co



1036 Cooriemungle Road Cooriemungle VIC

4 🏠 1 🚗 4 🚗

Right in the heart of the Heytesbury is this very appealing 10acre lifestyle property, the property boasts a very good four bedroom home, offering open plan kitchen living and dining with a magnificent blackwood cupboards, stainless appliances all electric, reverse cycle air-conditioning a wood heater with access to the magnificent wrap around veranda ideal outdoor living with blinds all round. Four great sized bedrooms master with built in robes, central bathroom, and huge family room at the rear.

Outside there are numerous sheds, firstly we have a four car fully lock up garage with full concrete floor and power connected, a workshop lock up with concrete and power, 3 bays, Machinery Shed 24m x 10m, a 6 car garage in the converted dairy all lock up concrete floor and power, another Machinery or Caravan shed extra high and an huge amount of hardstand (all bluestone) you could turn a

Land Size : 10 Acres
View : <https://www.falk.com.au/sale/vic/great-ocean-rd-otway-ranges/cooriemungle/residential/acreagesemirural/7861494>



David Falk
03 5561 1677

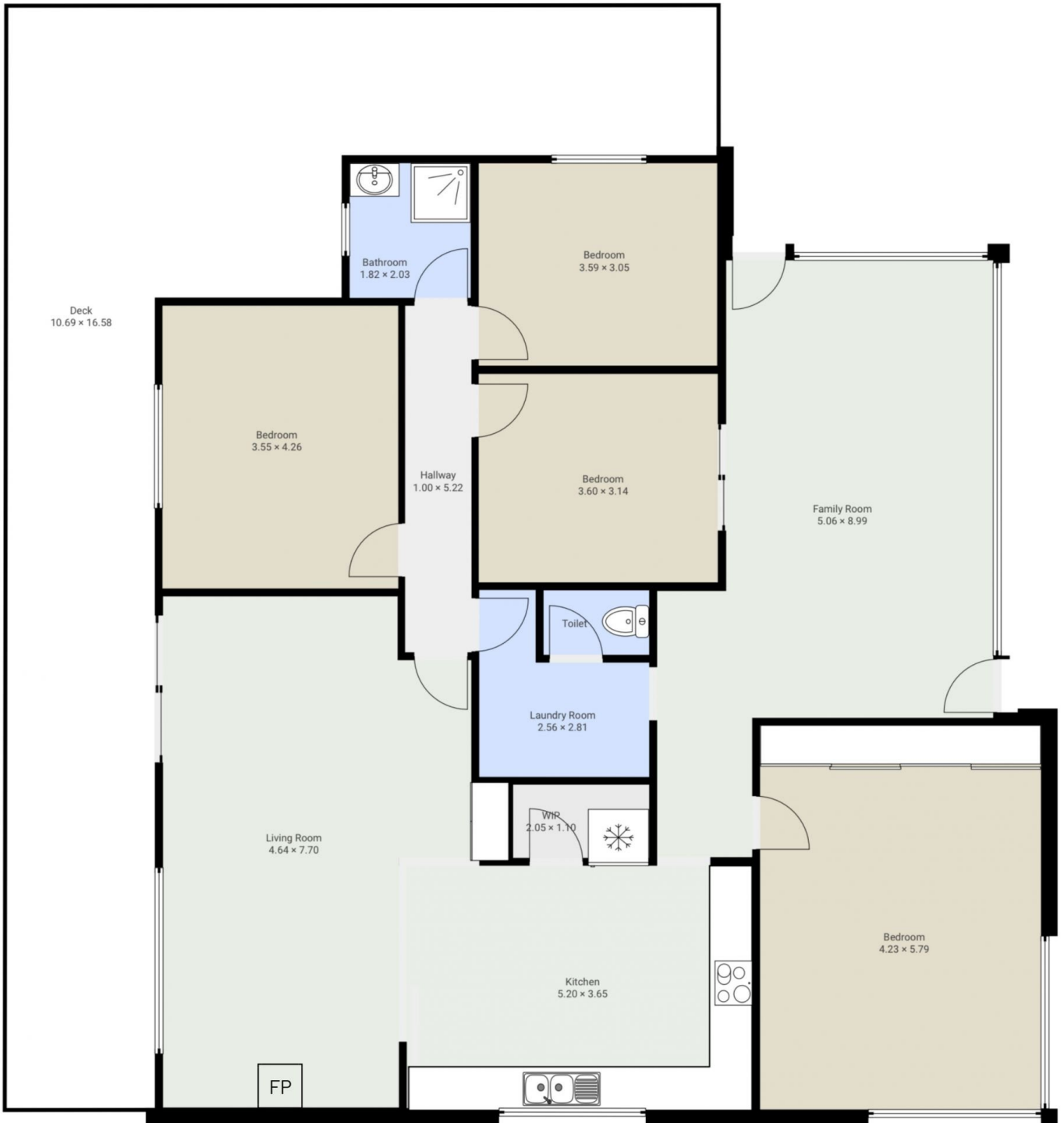


Pia Falk
03 5561 1677

1036 Cooriemungle Road, Cooriemungle

1036 Cooriemungle Road, Cooriemungle
FLOORS: 1

▼ Ground Floor



The measurements provided in this real estate floor plan are intended to serve as a general guide and for marketing purposes only. While every effort has been made to ensure accuracy, these measurements are not intended to be relied upon for any purpose, and should not be considered a guarantee of precise dimensions or square footage.

Falk & Co