

Falk & Co



2 Hopetoun Street Camperdown VIC

3  1  1 

Ideally situated on an 896m² corner allotment just a block back from the Manifold Street shopping precinct.

Behind the stone fence this well-presented weatherboard home comprises of an entrance hall lined with timber, living room with open fireplace and reverse cycle. Double doors in to the timber lined formal dining room with open fireplace. An updated kitchen with a stainless-steel freestanding stove. Three bedrooms all with built in robes serviced by a central bathroom. At the rear of the house, laundry with plenty of cabinetry, separate w/c and sunroom area. Large older freestanding garage.

Recently painted, carpeted and a new roof 2 Hopetoun Street is ready to move in. With plenty of room for a future addition to the existing home, large garage, or establish a garden.

Price : \$475,000
Land Size : 896 sqm
View : <https://www.falk.com.au/sale/vic/great-ocean-rd-otway-ranges/camperdown/residential/house/7949702>



David Falk
03 5561 1677

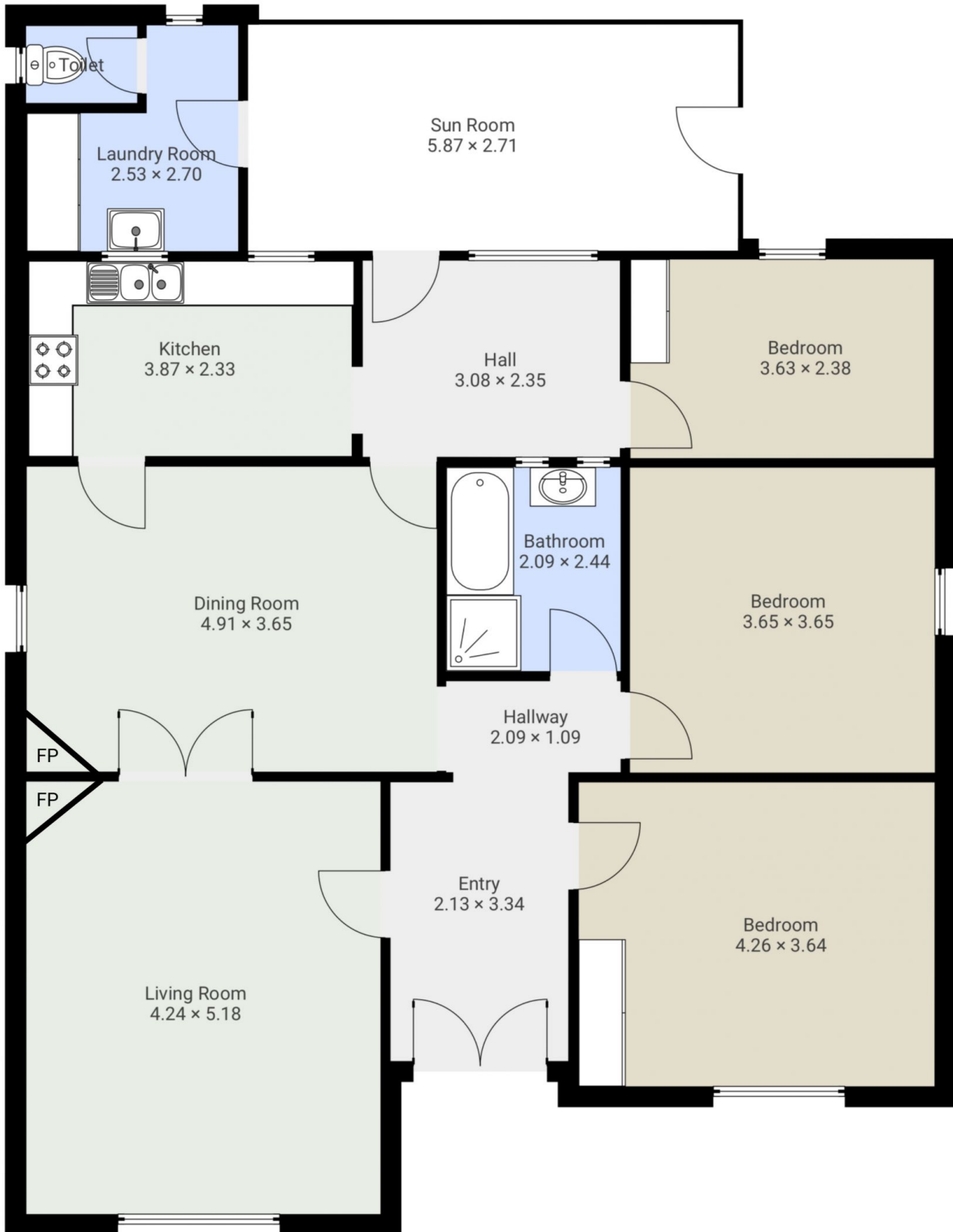


Pia Falk
03 5561 1677

2 Hopetoun Street, Camperdown

2 Hopetoun Street, Camperdown
FLOORS: 1

▼ Ground Floor



The measurements provided in this real estate floor plan are intended to serve as a general guide and for marketing purposes only. While every effort has been made to ensure accuracy, these measurements are not intended to be relied upon for any purpose, and should not be considered a guarantee of precise dimensions or square footage.

Falk & Co