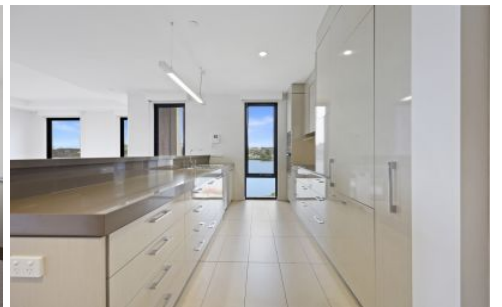


Falk & Co



9/2 Marfell Road Warrnambool VIC

2  2  1 

Magnificently located on the banks of the Hopkins River in Warrnambool, Respect Retirement Village (Rolfanna) offers a safe and relaxed river/beachside lifestyle with access to all the wonderful services and events Southwest Victoria has to offer.

Features include:

- 2 large bedrooms with river views with BIR and fans and ensuite in main bedroom.
- Open plan kitchen with new electric appliances, DW and pantry.
- Large lounge/living area opening onto a large north facing balcony that is protected from the southerly breeze.
- Main bathroom with shower and WC.

[For full version visit the website](https://www.falk.com.au)

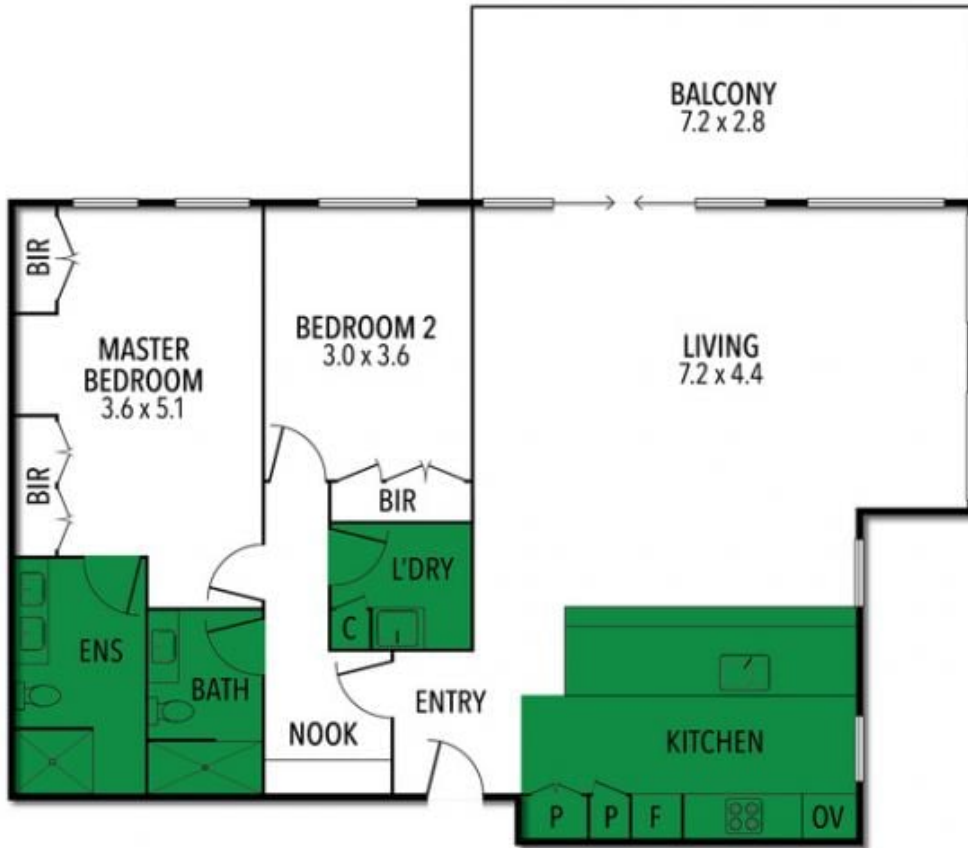
Type : Apartment
Price : \$675,000 to \$710,000
Building Size : 130 sqm
Land Size : 130 sqm
View : <https://www.falk.com.au/sale/vic/warrnambool-port-fairy/warrnambool/residential/apartment/8156681>



Gary Attrill
03 5561 1677

<https://www.falk.com.au>

APARTMENT 9/2 MARFELL ROAD, VIC



INTERNAL 130 SQM APPROX.

Falk & Co

THE ABOVE PLAN IS AN ARTIST'S IMPRESSION ONLY, IT INCLUDES ELEMENTS THAT ARE FOR DISPLAY PURPOSES ONLY AND MAY NOT BE TO SCALE. LANDSCAPING SHOWN IS INDICATIVE ONLY. DIMENSIONS ARE APPROXIMATE.