

Falk & Co



175 -177 Liebig Street Warrnambool VIC

3 🚗

Falk & Co are pleased to present 175 - 177 Liebig Street, Warrnambool for lease.

A blank canvas, with an expansive glass shop front, surrounded by a plethora of national operators in Warrnambool's main retail precinct.

The property is ideal for retail, office, cosmetic, allied health, hospitality and more (STCA).

Key Leasing Features:

- ? Building area: 1396.52m²* over two levels.
- ? Rear access for deliveries with room to park at least Two (2) vehicles
- ? Male & Female toilets.
- ? Strong surrounding national tenants
- ? Zoning: Commercial 1

Type : Retail
Building Size : 1396.52 sqm
Land Size : 1301 sqm
View : <https://www.falk.com.au/lease/vic/warrnambool-port-fairy/warrnambool/commercial/retail/8393966>



David Falk
03 5561 1677

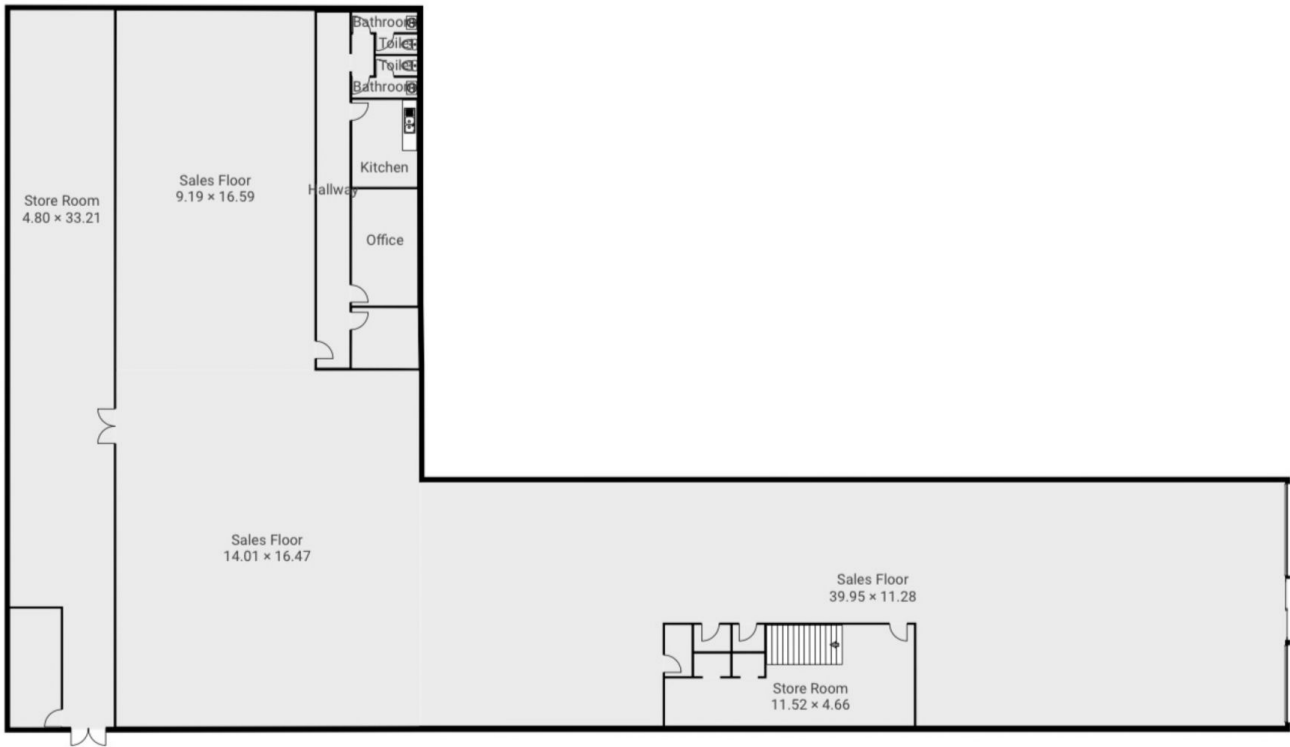
[For full version visit the website](https://www.falk.com.au)

<https://www.falk.com.au>

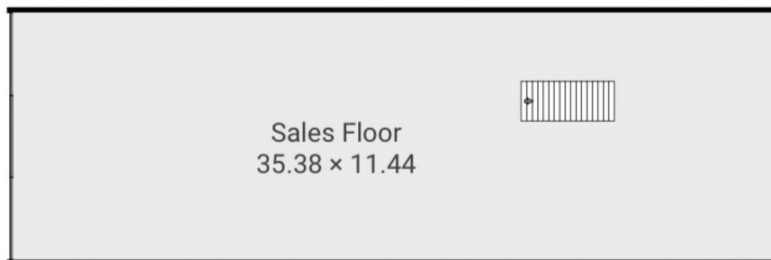
175-177 Liebig Street, Warrnambool

175-177 Liebig Street, 3280 Warrnambool, Victoria, AU
FLOORS: 2

▼ Ground Floor



▼ 1st Floor



The measurements provided in this real estate floor plan are intended to serve as a general guide and for marketing purposes only. While every effort has been made to ensure accuracy, these measurements are not intended to be relied upon for any purpose, and should not be considered a guarantee of precise dimensions or square footage.

Falk & Co